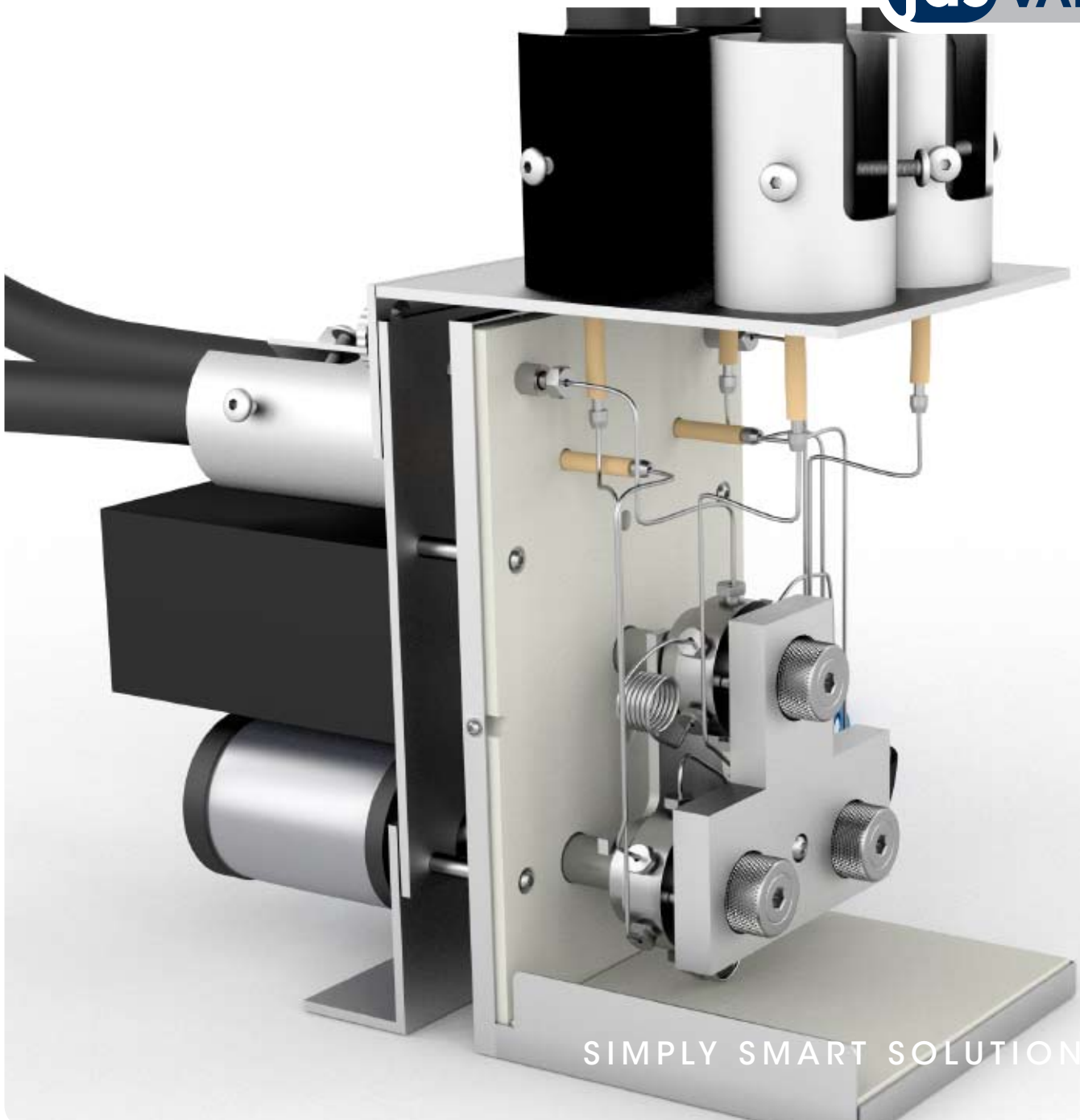


JAS Valve Solutions Building Kit

Versatile and Easy to Complete

jas VALVES



SIMPLY SMART SOLUTIONS

Notice

The information contained in this document is subject to change without prior notice.

joint analytical systems GmbH (JAS) reserves the right to correct any printing errors in this catalog. Application information in this catalog is for investigational use only and is not intended to be a complete laboratory diagnostic procedure or method. The performance characteristics of the procedures have not been fully established. The choice of methodology and procedures remains the responsibility of the user and not of JAS.

JAS does not grant warranty with regard to this material, including but not limited to the implied warranties of merchantability and fitness for a particular purpose.

JAS shall not be liable for errors contained herein or for incidental, or consequential damages in connection with the furnishing, performance, or use of this material.

No part of this document may be photocopied or reproduced, or translated without the prior written consent of JAS.

For more detailed information, requesting your personal copy of product brochures and for price acquisition or order placement, please contact us via:

joint analytical systems GmbH
Carl-Zeiss-Straße 49
47445 Moers
Germany

Products & Solutions:

Phone: +49 2841 9871 100

Fax: +49 2841 9871 222

Email: info@jas.de

Internet: www.jas.de

JAS Valve Solutions Building Kit

jas VALVES

The JAS GC-top Valve System is designed to simplify configuration and maintenance of custom valved solutions while delivering superior performance.

In most cases valved GC systems are highly complex. A configuration of a couple of 6 or 10 port sampling, switching and/or multi position valves can easily require routing and connecting more than 50 tubes. Process configurations may require the addition of up to 6 heated transfer lines.

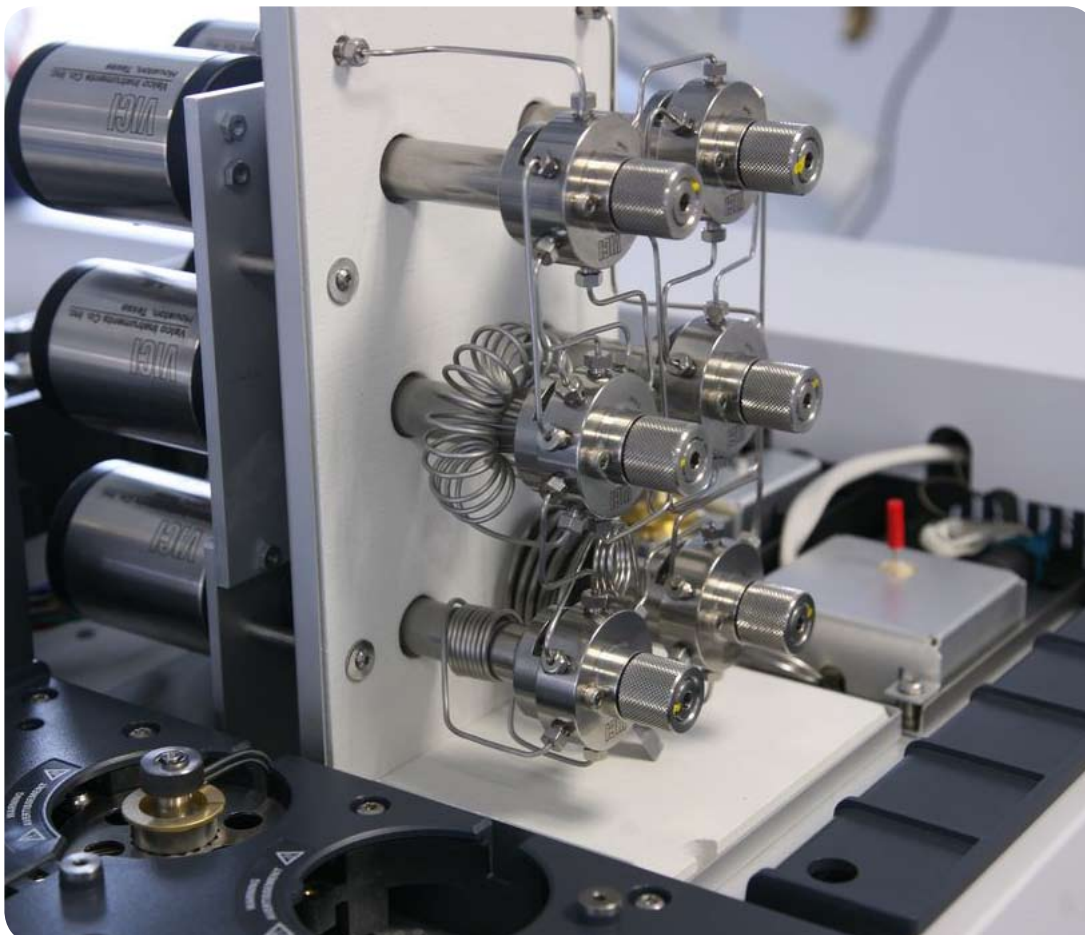
Therefore, the basic design of a valve enclosure must be as simple and versatile as possible. Our easy-to-access valve box incorporates a novel one-screw design to hold the heating block firmly in place, to assure optimal heat transfer to the valves while at the same time providing a simple

and quick release for full access to the valves when needed. Whether pneumatic rotary valves, with quick connectors or driven multi position valves are used, full and comfortable access to valves is ensured. With a minor change, the valve box can be converted into an isothermal GC column oven for use with highly effective and convenient micro packed column spools. Smart components like an electronic valve position indicator or a gas injection control unit add flexibility and capability to the portfolio.

Please contact us for more detailed information.

info@jas.de

- GC-top design
- Versatile
- Uniformly heated
- Easy to access
- Easy to configure
- Easy to maintain
- Upgradable
- Gas valves
- Liquid valves
- Multi position valves



JAS Valve Solutions Building Kit



Valve Box for up to 4 Rotary Valves or 2 Rotary and 1 Multi Position Valve.
Kit includes:

1. Ceramic insulated hood
2. Ceramic insulated pre-punched L-shape base
3. Plastic cover*
* Stainless steel cover for high temperature and process applications (optional)



2



3



3*

JAS Valve Solutions Building Kit



Valve Box for up to 6 Rotary Valves or 4 Rotary and 1 Multi Position Valve.
Kit includes:

1. Ceramic insulated hood
2. Ceramic insulated pre-punched L-shape base
3. Stainless steel cover

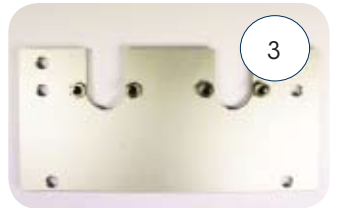


JAS Valve Solutions Building Kit



Valve Mounting Brackets:

1. Basic valve mounting bracket for 2 valves
2. Extension for 1 more valve (optional for rotary, mandatory for multi position)
3. Extension for 2 more valves
4. Extension for 4 more valves



JAS Valve Solutions Building Kit



Micropacked Column Mounting Brackets and Fittings:

1. Single column mounting bracket
2. Double column mounting bracket
3. Triple column mounting bracket
4. Bracket for T-piece or cross piece
5. Bulkhead adapter for capillaries
6. Bulkhead adapter for 1/16" tubes
7. Bulkhead adapter for 1/8" tubes
8. UNICAP graphite ferrule adapter for capillaries



JAS Valve Solutions Building Kit



Aluminium Heating Block Assembly for up to 2 Valves.
Kit includes:

1. Heating block
2. Counter bracket
3. Heater sensor cable assembly
4. Screw



1



2



3



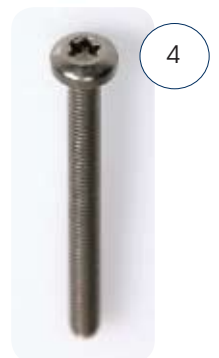
4

JAS Valve Solutions Building Kit



Aluminium Heating Block Assembly for up to 3 Valves.
Kit includes:

1. Heating block
2. Counter bracket
3. Heater sensor cable assembly
4. Screw

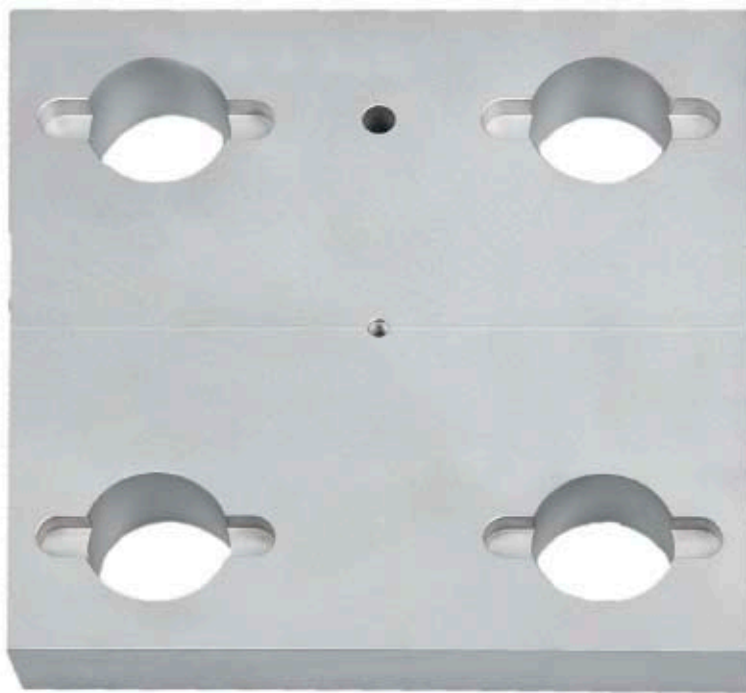


JAS Valve Solutions Building Kit



Aluminum Heating Block Assembly for up to 4 Valves.
Kit includes:

1. Heating block
2. Counter bracket
3. Heater sensor cable assembly
4. Screw



1



2



3



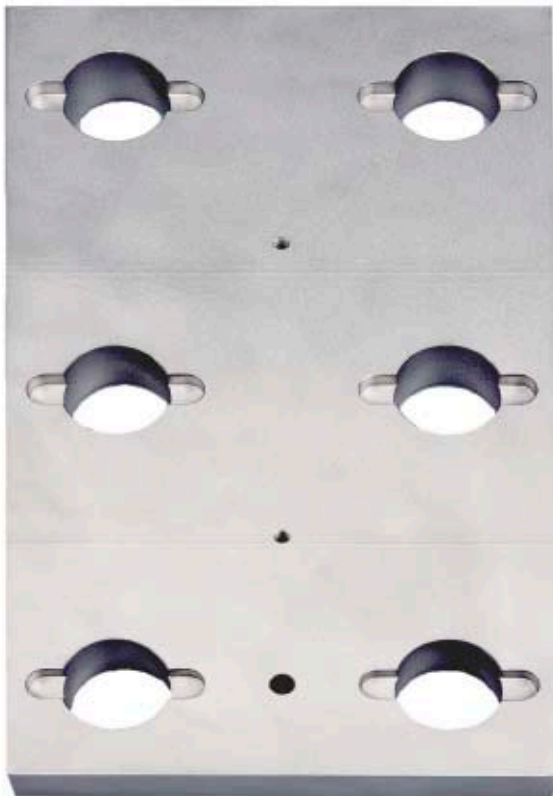
4

JAS Valve Solutions Building Kit



Aluminum Heating Block Assembly for up to 6 Valves.
Kit includes:

1. Heating block
2. Counter bracket
3. Heater sensor cable assembly
4. Screw



1



2



3



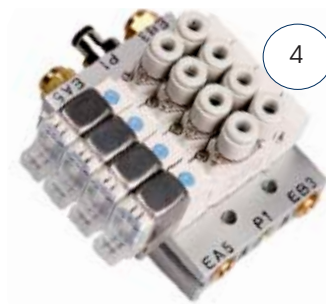
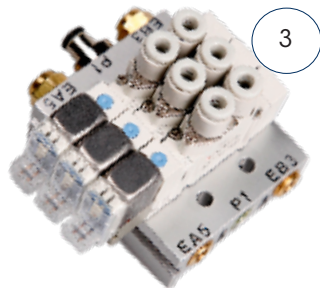
4

JAS Valve Solutions Building Kit

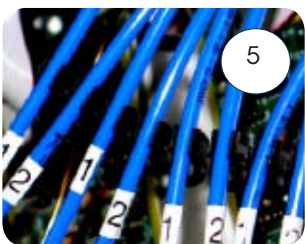


Pneumatic Control Valves Used to Drive the Actuators:

1. 1 x Valve assembly
2. 2 x Valves assembly
3. 3 x Valves assembly
4. 4 x Valves assembly
5. Tube
6. Harness
7. Mounting bracket



7

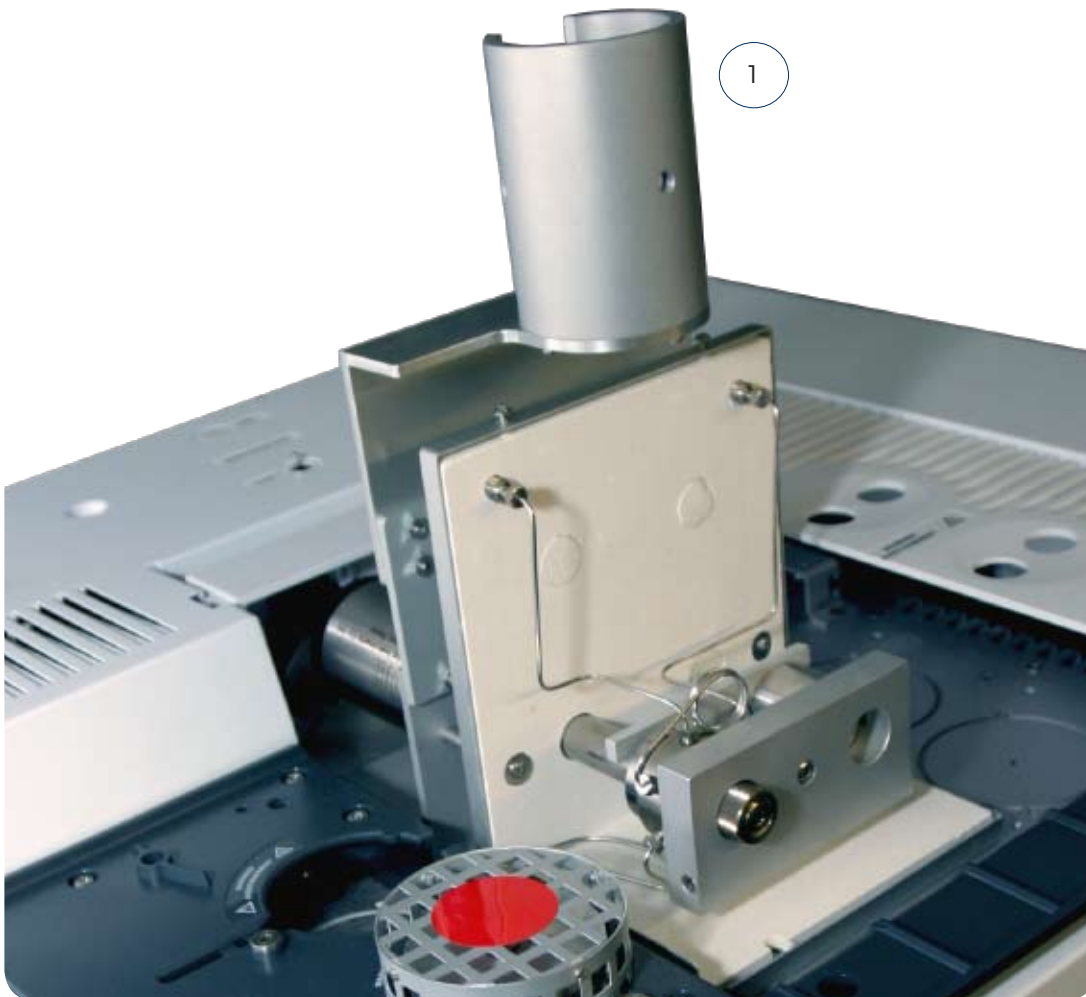


JAS Valve Solutions Building Kit



Mounting Brackets and Fixtures for Heated Transfer Lines:

1. Assembly for 1 transfer line
2. Bracket for 1 transfer line
3. Bracket for 2 transfer lines



JAS Valve Solutions Building Kit



Mounting Brackets and Fixtures for Heated Transfer Lines:

1. Assembly for 6 transfer lines
2. Bracket for 4 transfer lines
3. Add item 2 & 3 for a 6 transfer lines setup
4. Heated transfer line

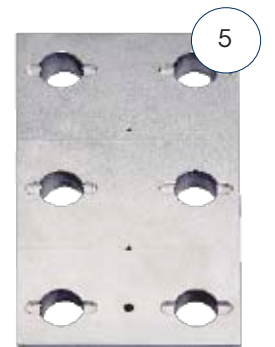
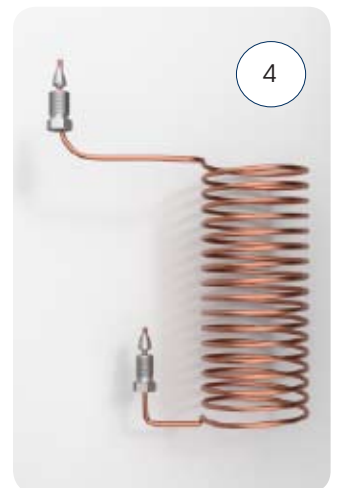
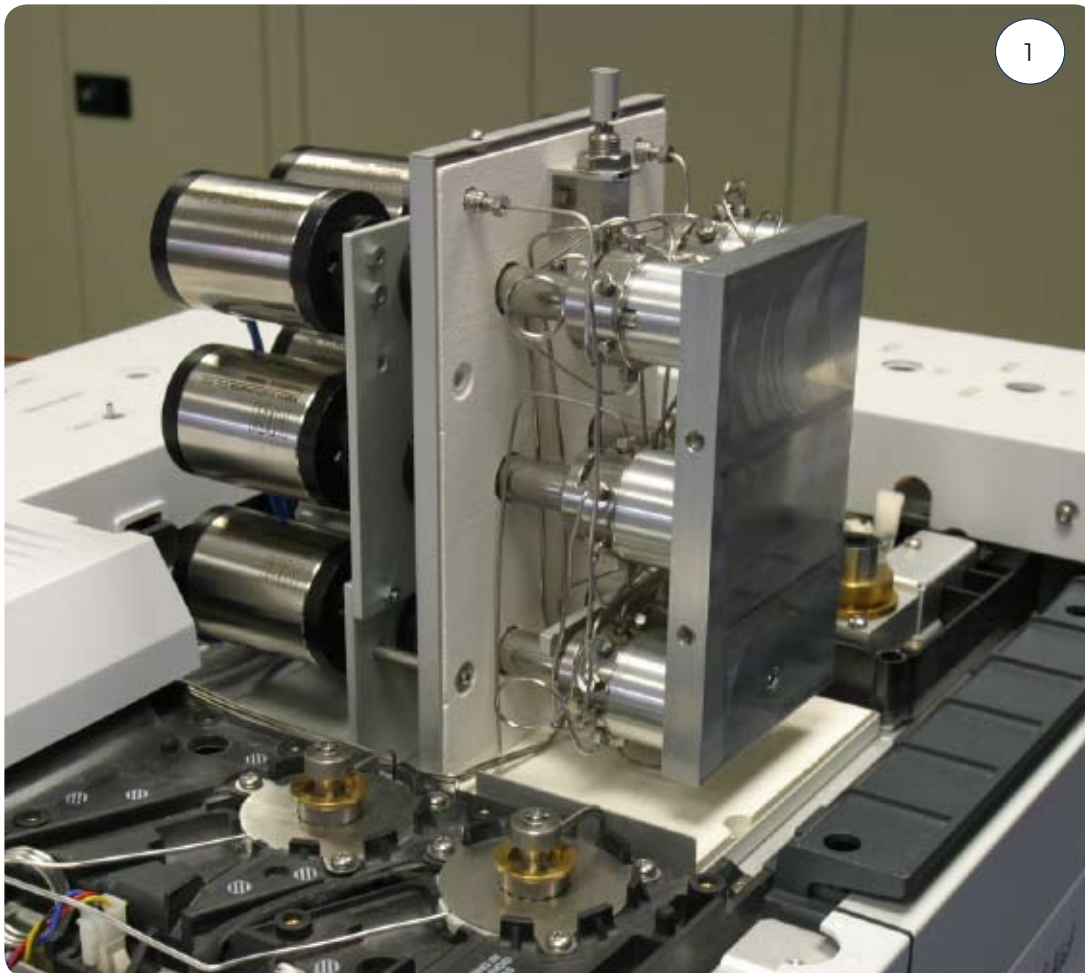


JAS Valve Solutions Building Kit



Assembly for Adding up to 6 (1/16") Micro Packed Columns (Replaces the Standard Heating Block):

1. Assembly for up to 6 (1/16") micro packed columns
2. Column heat transfer spool
3. Column heat transfer sleeve
4. Micro packed column
5. Heating block



JAS Valve Solutions Building Kit



Gas and Liquid Sample Handling:

1. Double sampling unit for quick connector equipped cylinders
2. Single sampling unit for quick connector equipped cylinders
3. 3-Way valve with bracket



1



2



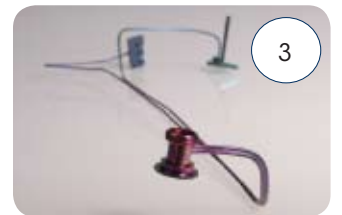
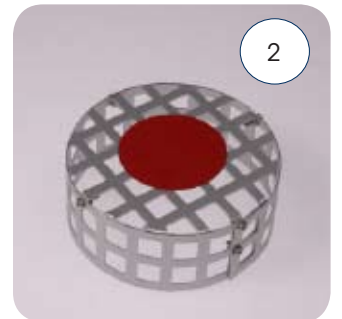
3

JAS Valve Solutions Building Kit



Heated Interface Between Valve Box and Inlet:

1. Aluminium heating block assembly for inlets
2. Cover
3. Inert inlet head with connection to the valve box

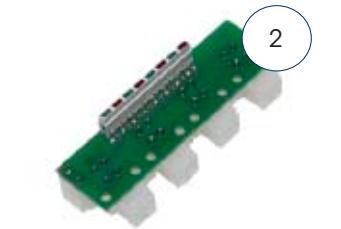


JAS Valve Solutions Building Kit



Electronic Valve Positioning Indicator Kit:

1. Sensor
2. LED - indicator
3. Cap



JAS Valve Solutions Building Kit



Extender Box: Adds Control of 4 More Valves to Agilent 6890 & 7890 GCs:

1. Extender box for 4 additional valves
2. Power supply
3. External event cable



1

2



3

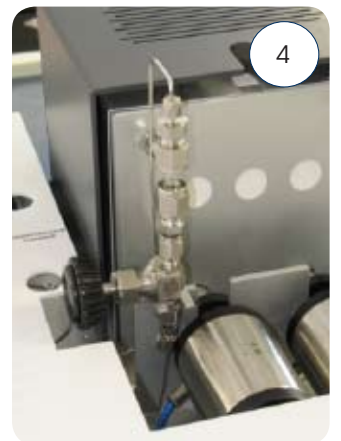
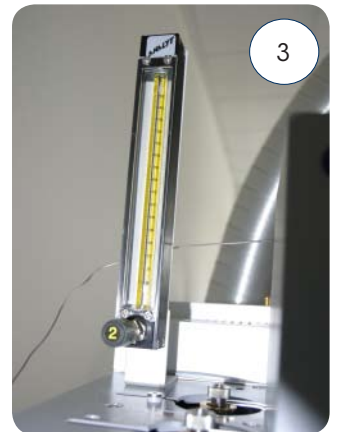


JAS Valve Solutions Building Kit



Sample Handling:

1. Flow meter
2. Digital pressure gauge
3. Flow meter
4. Inspection glas to verify liquid phase injection



JAS Valve Solutions Building Kit



Gas Injection Control Unit (GICU) Allows to Reproducible Inject Gases at Pressures Between 100 mbar and 2 bars:

1. GICU Set-up
2. Vacuum pump



JAS Valve Solutions Building Kit



Accessories:

- | | |
|---|------------------------|
| 1. Blind plug for quick connectors 4 mm | 7. Valve cable harness |
| 2. Blind plug for quick connectors 6 mm | 8. UNICAP cross piece |
| 3. Tube reinforcement bushing | 9. Cross piece |
| 4. Spacer for unused valve position | 10. T-piece |
| 5. AIR-IN distribution assembly | 11. Valve |
| 6. Needle valve with bracket | 12. Sample loops |



1



2



3



4



5



6



7



8



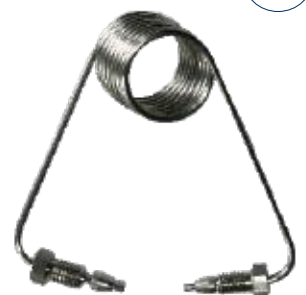
9



10



11



12



About joint analytical systems

Since 1995 JAS has been a Premier Solution Partner and Value Added Reseller of Agilent Technologies. We are an innovative-driven organization that offers customized solutions for GC, GCxGC, μ GC, GC-AED, GC-MS, GC-QQQ, LC, LC-MS, LC-QQQ and Q-TOF LC-MS applications.

JAS serves key industries such as

- Chemical
- Environmental
- Food and Flavor
- Forensic
- Clinical
- Petrochemical
- HPI

JAS Products for GC

- Atomic Emission Detector
- CryoTrap
- Customized Valving System
- EzPrep - Preparative Fraction Collector
- Olfactometer
- UNIS Inlets

joint analytical systems GmbH

Carl-Zeiss-Str. 49
47445 Moers
Germany

Phone: +49 2841 9871 100
Fax: +49 2841 9871 222
e-Mail: info@jas.de
Internet: www.jas.de

Copyright © 2013

joint analytical systems GmbH

All rights reserved